



# Authorization procedure for test labs

March 2017

version 20170303

## 1. Study phase

- a. Study the Qi test lab requirements
- b. Join the Wireless Power Consortium
- c. Download the specifications (parts 1, 2, 3 and 4)
- d. Study specifications & procedures
- e. Attend CCT meetings and conference calls as observer
- f. Review the Authorized Test Lab agreement

## 2. Preparation phase

- a) ISO accreditation
- b) Purchase compliance test system
- c) Arrange resources
- d) Get training

## 3. Auditing / approval phase

- a) Enter audit procedure
- b) Audit and Authorization by the Steering Group
- c) Sign the Authorized Test Lab agreement

## 1. Study phase

- a. Study the Qi test lab requirements
- b. Join the Wireless Power Consortium
- c. Download the specifications (parts 1, 2, 3 and 4)
- d. Study specifications & procedures
- e. Attend CCT meetings and conference calls as observer
- f. Review the Authorized Test Lab agreement

## 2. Preparation phase

- a) ISO accreditation
- b) Purchase compliance test system
- c) Arrange resources
- d) Get training

## 3. Auditing / approval phase

- a) Enter audit procedure
- b) Audit and Authorization by the Steering Group
- c) Sign the Authorized Test Lab agreement

# 1 Study phase

- a) Study the requirements on how to become an Authorized Test Lab (ATL).

It is also a good time to decide for what scope the ATL shall be audited.

The scope for Power Class 0 is:

Baseline Power Profile (BPP)  $\leq 5W$

Baseline Power Profile + FOD extension (BPP+FOD)  $\leq 5W$

Extended Power Profile (EPP)  $\leq 15W$

Other power classes will be added when available.

This document is a good start and when needed the CCT-chair and ATL-chair can give you support on this.

The email addresses you can find in this document.

# 1 Study phase

## b) Join the Wireless Power Consortium.

Only member of the WPC have access to the test specifications and other documents relevant to product testing and registration.

There are several levels of membership, but ATL's are required to have at least Associate membership level.

More information on membership levels and on how to join the WPC you can find here:

<https://www.wirelesspowerconsortium.com/membership/#membership-type>

As soon as you have been acknowledged as member, you are granted access to the member site of the WPC website.

# 1 Study phase

The members of the WPC are experts who work together to improve- and extend the current specifications.

There are several working groups which all try to improve their parts, like regulatory working group, specification working group and the ATL's, plus several more.

It is expected from members to actively participate, and ATL's shall actively cooperate with other members to improve testing requirements.

# 1 Study phase

- c) Download the specification.

As non-member you already can download part 1,2 and 4.  
However, the test specification is described in part 3 and only accessible to members.

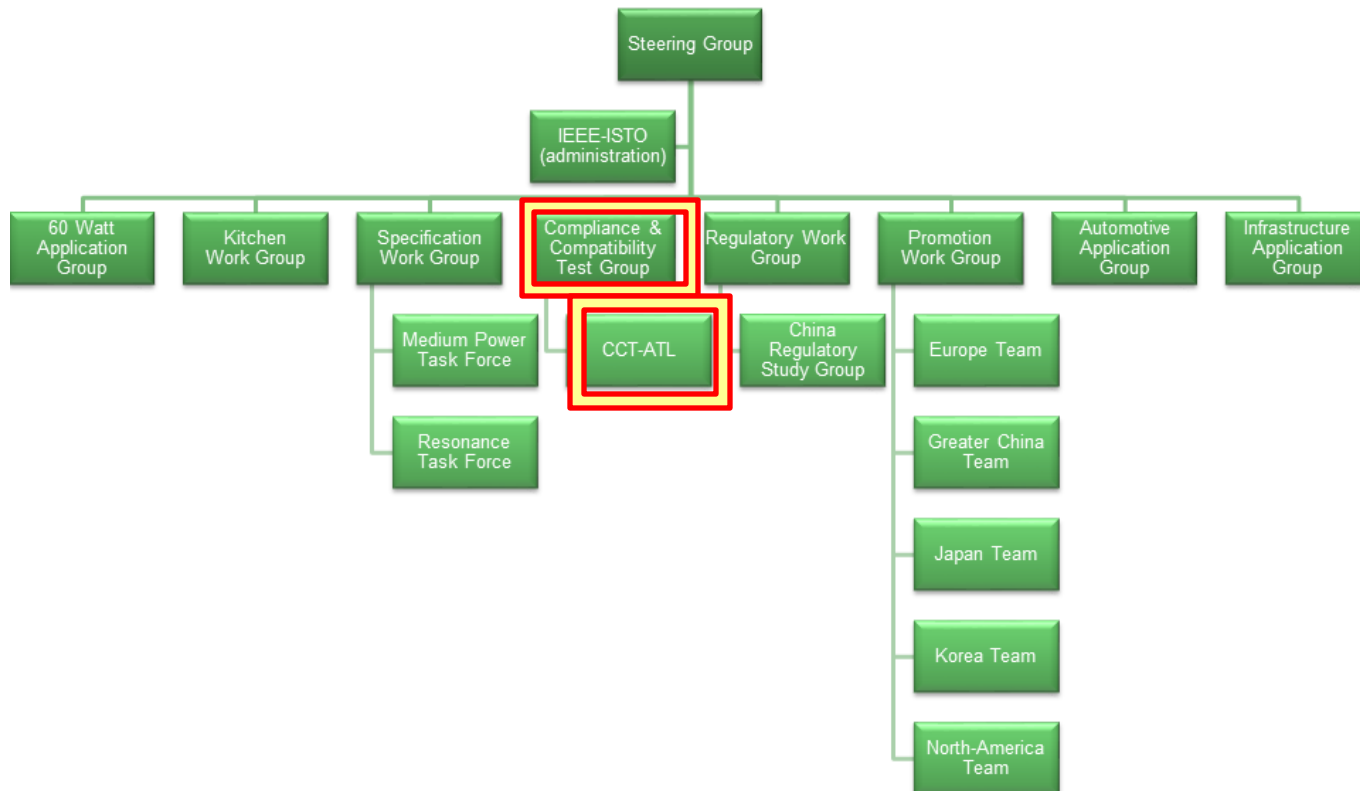
Part 1 and 2 describe the Interface definition.  
Part 3 are the compliance test requirements.  
Part 4 are the reference design.

- d) Study specifications & procedures

It is absolutely necessary to study these documents.  
Besides the specifications, for ATL's also the registration procedure and the Logo License Agreement are essential.  
The ATL-chair is always available to answer your questions.

# 1 Study phase

Wireless Power Consortium structure.





# 1 Study phase

- e) Attend CCT meetings and conference calls as observer

The Compliance and Compatibility Test group (CCT) is only accessible for Regular members, Test system providers, Interop Test Lab and ATL's.

The CCT discusses:

- Development and maintaining Part 3 of the specifications

- Define certification process

- Discuss and approve test systems used for compliance testing.

- Test labs report to the CCT their activities via the ATL-chair.

As aspirant ATL you are allowed to join the CCT meetings as observer.

The ATL meetings you only can join as soon as the Authorized Test Lab agreement is signed.

# 1 Study phase

- f) Review the Authorized Test Lab agreement.

Most likely your legal department will have to give their approval before the Authorized Test Lab agreement can be signed.

The agreement will be signed after successfully passing the technical audit.

In most companies this takes quite some time.

Therefore it is better to start this process as soon as possible, not to delay authorization procedure.

## 1. Study phase

- a. Study the Qi test lab requirements
- b. Join the Wireless Power Consortium
- c. Download the specifications (parts 1, 2, 3 and 4)
- d. Study specifications & procedures
- e. Attend CCT meetings and conference calls as observer
- f. Review the Authorized Test Lab agreement

## 2. Preparation phase

- a) ISO accreditation
- b) Purchase compliance test system
- c) Arrange resources
- d) Get training

## 3. Auditing / approval phase

- a) Enter audit procedure
- b) Audit and Authorization by the Steering Group
- c) Sign the Authorized Test Lab agreement

## 2 Preparation phase

a) ISO accreditation.

The auditor will ask for an ISO17025 certificate obtained by your company.

The reason is to verify that a quality manual and procedures exist and are in place and that samples and reports are handled correctly.

The auditor can ask for ISO17025 related items, like working instructions, report templates etc.

## 2 Preparation phase

### b) Purchase compliance test system.

All ATL's shall use validated test equipment for compliance testing.

This equipment consists of a Base Station Tester with coils and special designed Foreign Objects and a Mobile Device Tester.

In addition to this, an oscilloscope is required and an LCR-meter in case of testing Extended Power Profile

Nok9 from Sweden is manufacturing, maintaining and calibrating the validated CATS test systems.

CATS I is for Baseline Power Profile  $\leq 5W$

CATS II is for the Extended Power Profile  $\leq 15W$

More information on these system you can find here:

<http://www.nok9.com/cats-2>

All devices have to be calibrated and a calibration schedule shall be presented.

## 2 Preparation phase

Micropross from France is also preparing for test system validation. These systems are only capable for testing the EPP profile and are not validated yet, therefor ATL's can not use it for compliance testing. More information you find at: <http://www.micropross.com/>

AVID (<http://www.avid-tech.com/>) from the USA is providing development tools. These tools can be used during the development process of Transmitters and Receivers and prepare for real compliance testing.

## 2 Preparation phase

c) Arrange resources.

The ATL needs to have sufficient resources to offer Qi compliant testing to their clients.

The auditor will question each person that is involved in Qi testing.

Also a dedicated temperature controlled room shall be available.

d) Get training.

It is essential that the specification is totally understood, not only part 3 (test spec) but also all other parts.

If training is required, please contact the ATL-chair for more information.

## 1. Study phase

- a. Study the Qi test lab requirements
- b. Join the Wireless Power Consortium
- c. Download the specifications (parts 1, 2, 3 and 4)
- d. Study specifications & procedures
- e. Attend CCT meetings and conference calls as observer
- f. Review the Authorized Test Lab agreement

## 2. Preparation phase

- a) ISO accreditation
- b) Purchase compliance test system
- c) Arrange resources
- d) Get training

## 3. Auditing / approval phase

- a) Enter audit procedure
- b) Audit and Authorization by the Steering Group
- c) Sign the Authorized Test Lab agreement



## 3 Auditing / approval phase

- a) Enter audit procedure.

To be recognized as an Authorized Test Lab which allow you to offer Qi compliance testing services, the aspirant ATL has to officially enter the audit procedure.

This is done by:

- a) Inform the CCT-chair and ATL-chair of your intention.
- b) The ATL-chair will contact you with the request to prepare and return the 'audit package'.
- c) This 'audit package' will reviewed and approved by the CCT-chair and ATL-chair.
- d) After approval the ATL-chair will make an appointment for an on-site audit.

The on-site audit will take two days plus one day preparing and reporting per Power Profile.

## 3 Auditing / approval phase

### b) Audit and Authorization by the Steering Group.

After successfully passing the audit, the auditor will prepare the audit report.  
If the auditor find too many deviations, he will ask the lab to correct these  
and the auditor will make a new appointment for the follow up audit.

The auditor will recommend the approval of the aspirant ATL to the CCT-chair.  
And the CCT-chair will ask the Steering Group to authorize the aspirant ATL.

### c) Sign the Authorized Test Lab agreement

After the Steering Group has given its approval, the Logo License Administrator  
will sign the Test Lab Agreement, which the ATL shall counter sign.

When the counter signed agreement has been received, the ATL is allowed to  
offer their testing services according the scope in the audit report.

# Contact information

Feel free to contact the following persons for your inquiries:

CCT-chair: Hans Kablau  
[cct-chair@wirelesspowerconsortium.com](mailto:cct-chair@wirelesspowerconsortium.com)

ATL-chair/Auditor: Jan-Willem Vonk  
[atl-chair@wirelesspowerconsortium.com](mailto:atl-chair@wirelesspowerconsortium.com)

